



4101 Garland Dr, Fort Worth, Texas
Phone: 817-485-6073

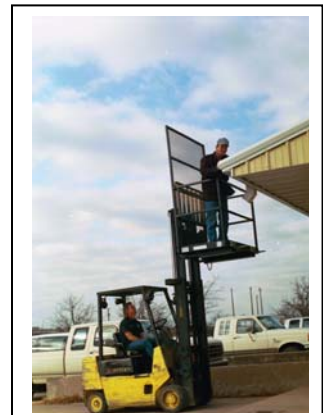
JULY 2010



SAFETY WORK PLATFORM



MODEL 1208B SHOWN



INDUSTRIAL PLATFORM

OPERATORS MANUAL AND SAFETY INSTRUCTIONS FOR STAR SAFETY WORK PLATFORMS

INCLUDES MODELS

1204B, 1206B, 1208B, 1210B, (Slip-On-Forks) SAFETY WORK PLATFORMS

1204BQT, 1206BQT, 1208BQT, & 1210BQT QUICK-TACH SAFETY WORK PLATFORMS

1203B & 1244B INDUSTRIAL WORK PLATFORMS

Platform Descriptions:

Star Safety Work Platforms and Quick-Tach Safety Work Platforms feature a personnel deck with a full perimeter guard rail system. They are designed to elevate personnel and small tools using rough terrain straight-mast or extendable-reach forklifts.

Industrial Work Platforms are designed for maintenance, inventory, and similar work using a straight mast industrial lift truck. These platforms feature a 2 piece integral mast protection screen which is required with straight mast lift trucks. They also have a perimeter guardrail rail system. The front mid rail lifts for entrance into the platform.

Star Safety Work Platforms have been tested and exceed structural requirements that allow us to rate the platforms at 1000 lbs. load capacity.



SAFETY STANDARDS AND REQUIREMENTS FOR STAR SAFETY WORK PLATFORMS

All styles of Star Safety Work Platforms are designed and built in accordance with and comply with the requirements of ANSI/ITSDF B56.1 2005 Safety Standard for Low Lift and High Lift Trucks and ANSI/ITSDF B56.6 2005 Safety Standard For Rough Terrain Forklift Trucks. They also meet or exceed the requirements of O.S.H.A., M.I.O.S.H.A. (state of Michigan), and C.A.L.O.S.H.A. (state of California). Canadian Safety standards vary somewhat by province but generally parallel OSHA allowing Star platforms to conform to their standards as well.

Please note that M.I.O.S.H.A. requires personnel to wear a body harness and lanyard to limit free fall to a maximum of 6 feet. Star Safety Platforms have anchor plates for lanyards built into the guardrails for this purpose. These Anchor plates have been tested in accordance with and fully comply with the requirements of ANSI/ITSDF B56.6 2005 and M.I.O.S.H.A. O.S.H.A. and C.A.L.O.S.H.A. do not require body harness and lanyards unless guardrails are not used. Star Safety Work Platforms are not designed be used without full perimeter guardrails. Star encourages the use of personnel lanyards even if not required.

In regards to platform length, ANSI/ITSDF B56.6 2005 and M.I.O.S.H.A. have requirements limiting platform length to 10" past the load bearing tires on each side. This means a rough terrain forklift that is 8'0" or wider can use up to a model 1210B which has an overall length of 9'-8". Outriggers are not addressed in relation to platform length and whether or not the 10" rule would apply to the width across the outriggers is not addressed. It should be noted that the O.S.H.A. manual references an older ANSI standard, B56.1 1969. This standard does not restrict platform length; nevertheless in most areas of the country OSHA is enforcing the current ANSI/ITSDF B56.6 2005 standard which has the 10" rule. It is Star Industries' recommendation to conform to this standard and observe the 10" rule. C.A.L.O.S.H.A. does not address the length of the platform.

A question that arises frequently is whether or not controls are required in the platform. Controls are not required in the platform on style of platforms manufactured by Star Industries and this is substantiated by an OSHA interpretation that specifically addresses this question.

The information provided herein is complete and correct to the best of our knowledge at the time of writing. It is recommended however that this be used only as a guide and that each user do their own investigation of applicable safety standards. Contact should be made with the respective forklift manufacturer for brand and/or model specific requirements or limitations applicable to the use of platforms to elevate personnel.



SAFETY RECOMMENDATIONS for *STAR Safety Work Platforms*

Prior to Use:

- 1) **Make sure forklift operator has been properly trained**, is knowledgeable of forklift model being used, is aware of all relevant safety regulations, and is properly certified.
- 2) **Install complete guardrail system.** Do Not Use Platform without full perimeter guardrails installed and secured with bolts and locking nuts
- 3) **Install optional mast protection screen** if moving parts of forklift represent a hazard to personnel on platform. Typically, screens are required on forklifts with an elevating mast. (Note: Mast Protection screen is built-in on Industrial Platform Models)
- 4) **Inspect complete platform and guardrail assembly** for rust, damage, broken welds, or missing parts. Check that safety decals are installed and legible. If any abnormality is found, discontinue use and contact a Star dealer for a safety inspection. Do not make any modifications to the platform without manufacturer's written approval.
- 5) **Be certain that forklift is in good operating condition** and that the lifting mechanism is operating smoothly throughout its entire lift /reach range both loaded and unloaded.
- 6) **Secure platform to forklift.**

‘Slip-on-Forks Style’ – install the two steel pins in the fork channel tabs and secure with hairpins behind heel of forks, also secure shaft mounted forks to carriage to prevent forks from tipping up. If carriage is equipped with a rotator, deactivate the rotation.

“Quick-Tach Style” – Attach to end of boom after carriage forks are removed. Use only with compatible quick-tach. Make sure all locking pins are installed and engaged.
- 7) **Establish a method of communication** between the forklift operator and personnel to be elevated. Review tasks to be performed and procedures to be followed. Mark area to warn of “work by elevated personnel.”
- 8) **Position forklift in desired location making sure the forklift is on firm footing.** Avoid operating on a side slope. Be certain the mast or boom is vertical and platform is level before loading personnel – do not operate frame tilt or mast tilt with personnel on platform. Check that the path of platform and boom travel is clear of all hazards such as electrical wires or other obstructions. Make certain forklift, forklift boom, and platform can maintain recommended safe distances from all power lines and electrical components. Do not use if overhead conditions constitute a hazard.



SAFETY RECOMMENDATIONS
for
STAR Safety Work Platforms

During Use:

- 1) Entrance gates must be secured before personnel are elevated. Personnel must not climb on or use guardrails as a ladder. Do not use ladders or any other device on the platform to gain additional height.
- 2) Alert elevated personnel before moving the platform and make positioning adjustments only at their request. Lift and lower personnel smoothly and with caution.
- 3) Platform must **not** be used to transport personnel across a jobsite. Forklift should be moved as close as possible to work area before allowing personnel on platform, then moved only as necessary for final positioning. Before elevating personnel, place transmission in neutral and set parking brake. Always lower platform to ground and allow personnel to exit before repositioning.
- 4) Forklift operator must remain at controls and stay alert when personnel are on platform.
- 5) Do not overload the platform or the forklift. The combined weight of the platform and the load (material and personnel - maximum 1000 lbs.), shall not exceed one-third of the capacity of the rough terrain forklift ($\frac{1}{2}$ of the capacity for industrial Lift trucks) at the related load center position as indicated on the forklift capacity chart.
- 6) When equipped always extend outriggers for increased stability.
- 7) Use only OSHA compliant safety harness and personnel lanyards. Do not attach more than one lanyard to a single lanyard anchor point.
- 8) Always follow safety recommendation and procedures of forklift manufacturer as well as comply with all local, state, and federal regulations.
- 9) End fork loops are for platform handling only and should never be used to elevate personnel.



Inspection of Star Safety Work Platforms Between Uses

- 1) Inspect top, sides, and bottom of steel structure for damage or broken welds. If any abnormality is found, discontinue use until it can be determined if structural integrity has been compromised.
- 2) Inspect steel structure and guardrails for rust. Discontinue use if structural integrity has been compromised, otherwise remove any surface rust and repaint to protect steel.
- 3) Inspect guardrails for damage and replace if there is any question about loss of strength. Inspect personal lanyard attachment points. Discontinue if any damage to the attachment points is found until repair or replacement can be made.
- 4) Inspect gate hinge and latch mechanism for damage or missing parts. Repair as needed before returning to service. Replace any missing bolts and nuts that secure the guardrails to the platform. **Caution**, the platform must not be used without the full guardrail system installed and secured with bolts.
- 5) Inspect fork pockets and attachments pins. Replace any missing or bent pins and make sure there are hairpins there to secure the locking pins.
- 6) Inspect the deck for damage or deformation. Replace deck if not structurally sound or if any deformation could create a tripping hazard.
- 7) Check to ensure the below listed decals are in place and legible
 - a) "Load Capacity" decal
 - b) "Operator Must Remain In Lift Truck" decal
 - c) "Guardrails Must Be In Place And Gates Secured" decal
 - d) "Empty Weight" decal (varies with platform model)
 - e) "OSHA" decal
 - f) "Safety Procedures for Safety Work Platforms" gate decal)



Mast Protection Screen Installation On Star Safety Work Platforms

1. Center screen in a vertical position on the outside of back guard rails. The bottom of the screen should rest on the extended fork pockets.
2. Secure with u-bolts to top rail and mid rail. Insert u-bolts from inside of platform around guardrail and square tubing (one leg of u-bolt through screen) on perimeter of screen. Secure with u-bolt plate and nuts. Each screen requires 4 u-bolts, one on each side at top rail and mid rail.
3. Make sure screen is properly secured before use.